

---

## Issues in Agriculture

---

*The Newsletter about Integrated Pest Management for the El Paso Valley*

---

Volume: 35  
Issue: 9  
Date: August 13, 2010

Salvador Vitanza, Ph.D.  
Extension Agent- IPM  
[svitanza@ag.tamu.edu](mailto:svitanza@ag.tamu.edu)



---

El Paso County Ysleta Annex ★ 9521 Socorro Rd ★ Suite A2-Box 2 ★ El Paso, TX 79927 ★ Phone: (915) 860-2515 ★ Fax: (915) 860-2536  
Texas AgriLife Extension El Paso County: <http://elp.tamu.edu/> Pecan IPM Pipe: <http://pecan.ipmpipe.org/>

---

## Announcements

- **Texas/New Mexico Sustainable Agriculture Workshop** on August 18 at the Texas AgriLife Research Center 1380 A&M Circle, El Paso, TX 79927 from 8:00 AM to noon. The program will continue at San Lorenzo Farm 14301 Alameda Ave. Clint, Texas 79836 from 1:00 PM to 4:30 PM. Lunch will be provided at San Lorenzo Farm. Five CEUs can be obtained by Pesticide Applicators and Certified Crop Advisers from Texas and New Mexico. Among other topics, attendees will learn about identification of soil quality indicators, factors that result in plant health stress, irrigation frequency, test analysis (plant tissue, soil, and water), reducing soil erosion and energy use. Sponsors: Texas AgriLife Extension Service, AgriLife Research, NMSU Cooperative Extension Service, Texas and New Mexico USDA-NRCS. For more information contact Dr. Jaime Iglesias (915-860-2515) or USDA-NRCS (915-855-0884, Ext. 107). This event is free of cost.
- **Western Pecan Production Short Course, in Las Cruces, NM.** September 8-10. Cost \$240 per person (it includes lectures, course materials, refreshments, 3 lunches, and field trip transportation). Hotel Encanto de Las Cruces (on I-25 take the Lohman exit), 705 S. Telshor Blvd, Las Cruces, NM. For more information: <http://pecans.nmsu.edu> or contact Peggy Salopek at 575-646-2875 ([psalopek@nmsu.edu](mailto:psalopek@nmsu.edu)).

### COTTON VARIETY TRIALS:

By the end of October, there will be a field day to discuss the cotton variety trials, but I know that busy schedules may not allow some of you to participate on the chosen date. In this issue, I would like to invite you to visit the trials whenever is most convenient to you. My goal is to provide you with directions and maps so you can visit the test plots and make your own observations. Of course, you are also invited to participate in the field day. Yield estimates and other plant parameters will be presented during the field day. All the plots are marked with wooden stakes indicating the variety.

### PIMA VARIETY TRIAL:

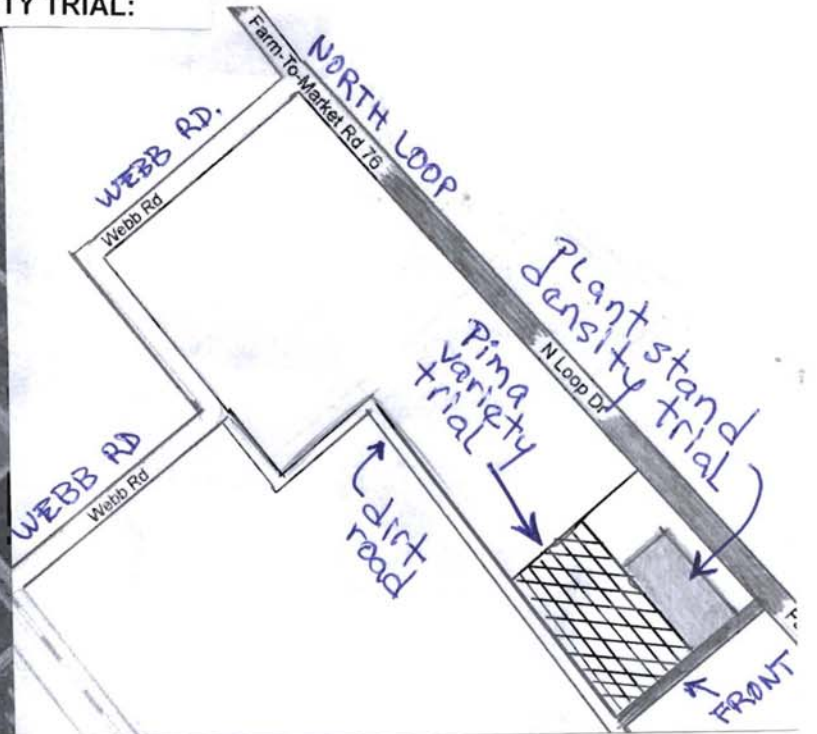
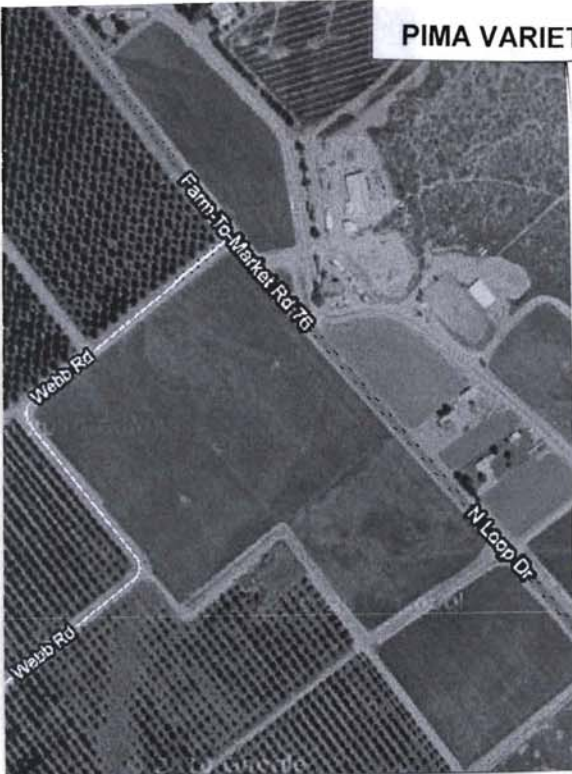
This test is located at Mr. Ramon Tirres Farm on North Loop southeast of Clint. It was planted on April 26, 2010 and includes five varieties (**Phy800, DP357, Phy830, cobalt, and DP340**) replicated four times. The stakes, labeling the plots, are placed in front of the first row from left to right (6 rows/plot). There is a six-row-wide margin before the trial starts. **Directions:** If you are coming from El Paso on I-10 E, take the exit # 42, make a right on Frontage Rd (also known as FM 1110 or Clint Cutoff Rd). Turn left at the traffic light on North Loop. Half a mile past the intersection with Webb Rd, make a right onto a dirt road (after passing the irrigation canal). The beginning of the trial is the corner that is farther away from North Loop (next to a pecan orchard).

### UPLAND VARIETY TRIAL:

The upland Bt/Roundup flex trial was planted at Dr. Harvey Hilley Junior's Farm On May 5, 2010 in Esperanza. It contains 12 varieties (**DP 164 B2RF, DP 0935 B2RF, DP 0949 B2RF, DP 1044 B2RF, DP 1048 B2RF, DP 1050 B2RF, PHY 375 WRF, PHY 565 WRF, ST 4288 B2F, FM 1740 B2F, FM 9160 B2F, and FM 9170 B2F**) replicated four times. The stakes in the upland trial are located on the first row from right to left (4 rows/plot). **Directions:** If you are coming from El Paso on I-10 E, take the exit # 81 onto Ranch Rd 2217. Turn right onto Ranch Rd 192. At the point where Ranch Rd makes a 90 angle to the right, make a left turn onto a dirt road (after passing a little bridge and a drainage canal). The trial is located east of the first road on the right. The beginning of the trial is next to the dirt road, immediately after an eight-row wide border margin.

PLEASE SEE MAPS ON BACK PAGE.

PIMA VARIETY TRIAL:



UPLAND VARIETY TRIAL:

